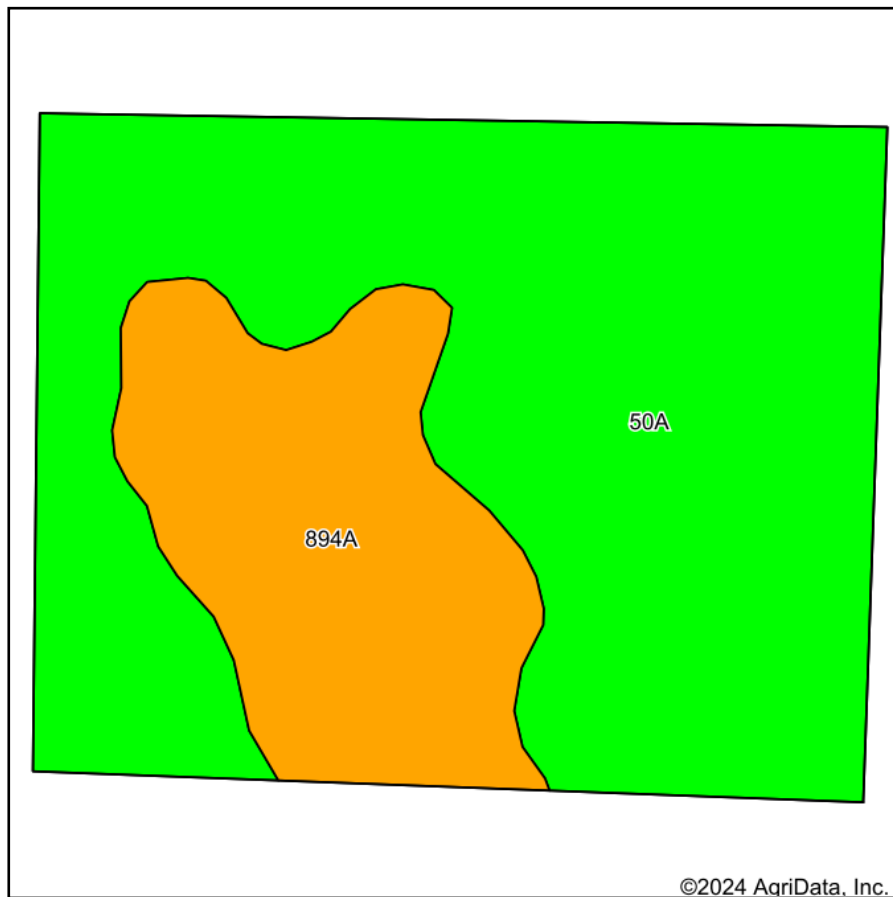
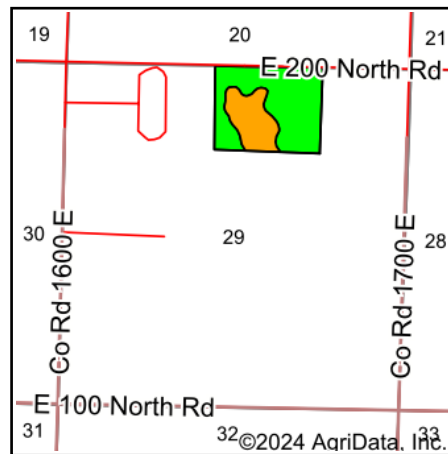


# Soils Map



Soils data provided by USDA and NRCS.



State: **Illinois**  
 County: **Christian**  
 Location: **29-11N-1W**  
 Township: **Rosamond**  
 Acres: **50.02**  
 Date: **12/26/2024**

Maps Provided By:  
  
 CUSTOMIZED ONLINE MAPPING  
 © AgriData, Inc. 2023 www.AgriDataInc.com



Area Symbol: IL021, Soil Area Version: 18

Code	Soil Description	Acres	Percent of field	Il. State Productivity Index Legend	Subsoil rooting <sup>a</sup>	Corn Bu/A	Soybeans Bu/A	Wheat Bu/A	Oats Bu/A <sup>b</sup>	Sorghum <sup>c</sup> Bu/A	Grass-legume <sup>e</sup> hay, T/A	Crop productivity index for optimum management	*n NCCPI Soybeans
**50A	Viriden silty clay loam, 0 to 2 percent slopes	36.60	73.2%		FAV	**186	**60	**75	**94	0	**5.40	**138	67
894A	Herrick-Biddle-Piasa silt loams, 0 to 2 percent slopes	13.42	26.8%		FAV	158	52	63	78	0	5.00	118	62
Weighted Average						178.5	57.9	71.8	89.7	*	5.3	132.6	*n 65.7

**Table: Optimum Crop Productivity Ratings for Illinois Soil EFOTG are sourced from Bulletin 811 calculated Map Unit Base Yield Indices, and adjusted (Adj) for slope, erosion, flooding, and surface texture.** Publication Date: 02-08-2023

Crop yields and productivity (B811 EFOTG) are maintained at the following USDA web site: 2023 Illinois Soil Productivity and Yield Indices: <https://efotg.sc.egov.usda.gov/#/state/IL/documents/section=2&folder=52809>

\*\* Base indexes from Bulletin 811 adjusted for slope, erosion, flooding, and surface texture according to the Il. Soils EFOTG

<sup>b</sup> Soils in the southern region were not rated for oats and are shown with a zero "0".

<sup>c</sup> Soils in the northern region or in both regions were not rated for grain sorghum and are shown with a zero "0".

<sup>e</sup> Soils in the well drained group were not rated for grass-legume and are shown with a zero "0".

\*n: The aggregation method is "Weighted Average using all components"